

**TITLE: 3D scan analysis of exemplar bitemark on  
inanimate objects**

**AUTHORS:**

**1. Dr. Kavita Rai**

Professor and HOD

Department of Pedodontics & Preventive Dentistry, Bangalore Institute  
of Dental Sciences, Bangalore, Karnataka.

Email ID: [drpedocare\\_rai@yahoo.co.in](mailto:drpedocare_rai@yahoo.co.in)

Ph:+91-9844205938

**2. Dr. Kiran .K**

Professor

Department of Pedodontics & Preventive Dentistry, Bangalore Institute  
of Dental Sciences, Bangalore, Karnataka.

Email ID: [drkkiran@gmail.com](mailto:drkkiran@gmail.com)

Ph:+91-9731196369

**3. Dr. Pooja**

Senior Lecturer

Department of Pedodontics & Preventive Dentistry, Bangalore Institute  
of Dental Sciences, Bangalore, Karnataka.

Email ID: [drpooja.bl@gmail.com](mailto:drpooja.bl@gmail.com)

Ph:+91-9886193344

**4. Dr.Anu Sasidharan**

Post Graduate Student

Department of Pedodontics & Preventive Dentistry, Bangalore Institute  
of Dental Sciences, Bangalore, Karnataka.

Email ID: [anusasidharan@gmail.com](mailto:anusasidharan@gmail.com)

Ph:+91-7406612955.

**ADDRESS FOR CORRESPONDENCE:**

Dr Anu Sasidharan

#761, 10<sup>th</sup> main, SRSnagar, Behind IIMB, Bannerghatta  
road, Bangalore-560076

Email ID: [anusasidharan@gmail.com](mailto:anusasidharan@gmail.com)

Ph:+91-7406612955.

**TITLE:** 3D scan analysis of exemplar bite mark on inanimate objects

**ABSTRACT:** Child abuse is prevalent in India in various forms. The physical/ sexual abuse presents with clinical signs and symptoms. Bite marks are clinical signs of abuse, in which the offender's dentition is imprinted. The unique features of the offender's dentition which are registered in the bite mark can be useful tools to compare with the dental casts of the offender. The comparison analysis of manual docking and hand trace overlays presents with limitations. The 3D docking analysis on an inanimate object (apple) showed 80% samples to be "most likely" match with the respective dental cast. The 3D docking analysis of the bite mark on putty showed 63.3% match to be "high certainty" match with the dental casts. Comparison of the distortion seen in both the material was seen to be high in the bite mark on apple; putty depicting negligible distortion.

**KEYWORDS:** bite mark, child abuse, comparison analysis, 3D scan, overlay

## INTRODUCTION

Child abuse is an issue that has been the apex of discussion since many decades.<sup>1-5</sup> However, the rate of increasing incidences of this situation is highly alarming. The innumerable challenges in preventing the different forms of abuse are many. The lacunae may be the barriers in recognising and identifying the signs and symptoms the victim presents with. Amongst the many forms of abuse, the physical form of abuse is rampant and most commonly overlooked. This may be followed by child neglect.

Physical abuse ranges from bruises to lacerations, sometimes even fracture of the extremities. Orofacial injuries are also common features.<sup>1-5</sup> Bitemark injuries found on the victims can be offensive wound whereas when found on the suspect may be inflicted while defending oneself from the offender. These injuries may prove to be an effective tool/ clue to identify the perpetrator. Bitemark are defined as “a pattern produced by human or animal dentitions and associated structures capable of being marked by these mean’s”<sup>4,5</sup>

A bitemark is also defined as a physical alteration in or on a medium caused by the contact of teeth.

The branch of forensics that deals with the legal aspects of professional dentistry with emphasis on the identification of victims/ suspects using dental records and dental unique features is termed as Forensic Odontology.<sup>4,5,6</sup> With the evolution of a formal board, the identification, analysis of the bitemark was discussed at length and universal identification techniques were identified.

Bitemark appears as an oval/circular patterned injury consisting of two symmetrical U shaped arches separated at their bases. Depending upon the nature of the biting action, there may be distinct singular bitemark or multiple bitemark which can be difficult to positively identify. Delay in identifying the bitemark can also lead to misdiagnosis of a bitemark as any other skin injury. Thus it is impertinent that the process of identifying and analysis

of a bite mark injury should begin at the first appearance. Details can often be lost in the process of wound healing in the living individuals or decomposition of the dead tissue.<sup>6,8,10</sup>

## **METHODOLOGY**

Bite mark from the participants of the study were obtained on perishable item like apple and putty ( dental elastomeric material) Children between the age group of 10 to 12 years were selected.

### **MATERIALS USED-**

1. Apples
2. Regular body addition silicone impression material( putty material)
3. Alginate impression material
4. Dental stone type 3
5. A rubber ball to simulate curved anatomy of human body.
6. ABFO no 2 scale<sup>8</sup>
7. Digital camera
8. 3D optical scanner(ATOS)

### **METHOD –**

Each child was instructed to sit down in an upright position or 'coachman position'.<sup>4,8</sup>

They were asked to bite into the apple with the upper anterior, in an incisive action.

A second bite from the same child was obtained on the putty material wrapped on the rubber ball. The putty material was manipulated according to the manufacturers' instruction. It was then rolled in an even layer onto the rubber ball. The patient was then instructed to bite into the putty material.

Thus two bite marks were obtained from each child.

To compare these bite mark, the dental cast of these patients were obtained. An alginate impression of the upper dentition was taken, which was poured with the dental stone type 3. The dental cast now served as a comparison record of the subject.

The analysis of the bitemark began with the scanning of the bitemark on the apple and on the putty material.

A 3D optical scanner was used to scan the bitemark from various angles and obtain a 3D image of the bitemark.

The dental casts also were scanned for a comparison. The dental casts were marked at the distal incisal edges with corresponding colour codes.

Black: midline

Red: distobuccal edge of left central incisor

Blue: distobuccal edge of left lateral incisor

Green: distobuccal edge of right central incisor

Yellow: distobuccal edge of right lateral incisor

Similar corresponding marks have been placed on the apple bitemark and the putty bitemark.

Identification of match of the bitemark on the corresponding colour codes on the dental casts was done. ICP (Iterated Closest Point) algorithm was used to align the scans of the incisal edges of the dental casts with the bitemark on the apple and bitemark on putty, independently. The algorithm aligned the incisal edges of the bitemark into the bitemark on the apple simulating the docking procedure which is done manually.<sup>8</sup>The alignment was done to align the scans at midline by default.

The bitemark on the apple and putty material were scanned on day 7 in similar manner as on the day 1, using the same 3D Optical Scanner. This was done to assess the distortion in the bitemark region in the both the material.

These scans were imported into the MeshLab software.

To study the distortion, using the 3d scans, the bitemark on apple (day 1) was aligned with the bitemark on apple (day 7) in a similar manner as in that of identification. The colour codes stated earlier were applied and the identification points were duly marked.

The scans were then aligned using the ICP (Iterated Closest Point) algorithm. The mean distance between the identification of

the corresponding points were calculated. A summation of these was considered the average distortion that occurred from the day 1 to the day 7.

## RESULTS

Matching (Agreement) of results between 3D Overlay Docking - Dental Cast to Apple and 3D Overlay Docking – Dental Cast to Putty:

The agreement between 3D Overlay Docking – Dental Cast to Apple and 3D Overlay Docking – Dental Cast to Putty was found to be negative and very weak and also not statistically significant ( $P > 0.05$ ).

The comparison of the 3D overlay technique in apple and 3D overlay technique in putty showed the relation to be weak and not statistically significant. The 3D scans of the apple bitemark and the putty bitemark when aligned with the dental casts have been shown to be of good forensic relevance. Though the putty material registered more dental features than the apple, the alignment with the dental cast of each of this material was not statistically different ( $p = 0.449$ ).

The comparison of the 3D overlay docking in apple when compared with the three other techniques showed statistical significance with manual docking analysis ( $p = 0.002$ ) and the 3D overlay docking in apple ( $p = 0.000$ )

## DISCUSSION

Bitemark on an abused child can often be misdiagnosed. Children present with various cutaneous injuries and presentations. Injuries can be due to fall/trauma, fight with the sibling or simply due to any blunt object. The differentiation of the injury as a bitemark is often based on the dental features. The incisal edges present as rectangular or square impressions and the canines present as triangular impressions. They typically present as oval or elliptical pattern with the teeth impressions at the periphery of the

bitemark. The number of teeth that are imprinted can depend on many factors such as the force of biting, position of biter/victim, and the topography of the body part where the bite is being registered.<sup>19,20</sup>

In this study, bitemark were obtained from each participating individual on two materials – apple and putty material wrapped on a rubber ball. The materials chosen were seen to simulate the topography of the human body. Thus when the subjects were asked to bite on the materials, bitemark produced simulated a bitemark on the skin.

The bitemark obtained were scanned using a 3D optical scanner. The scans were imported into MeshLab and aligned using ICP (Iterated Closest Point) algorithm. 3D overlay docking of the dental cast with the bitemark on the apple was done. The link between the dental cast and the bitemark on apple was seen to be “most likely to the biter” in 80 % of the match analysis; 20 % of the matches were observed as “can’t be ruled out”. No sample match showed any match of “high degree of certainty”.<sup>8</sup> The link between the 3D scan of the bitemark on the putty and the 3D scan of the dental cast were observed as “most likely to be the biter” in 63.3% of the match, whereas 36.7 % were observed to be of the grade “can’t be ruled out”.<sup>8</sup>

The incisal edges of the dental cast and the bitemark in apple and in putty were color coded with the corresponding colors. The alignment of the scans were done in a manner to have the incisal edges of the dental cast dock into the bitemark on apple and putty respectively. The observer recorded the observations as per the guidelines of the American Board of Forensic Odontology.<sup>8</sup>

Comparison of matching efficiency of the 3D scans of the apple bitemark and the 3D scans of the putty against each other in terms of reliability was carried out by Post- Hoc test, wherein the 3D docking analysis of the dental cast with the bitemark on apple was found to be of highest reliability. The second best reliable match was seen in the 3D docking analysis of the dental cast with

the bitemark on the putty. The third best reliability in the match was seen with the manual docking analysis. The least significant reliability was seen in the hand traced overlay analysis of bitemark.

Though photographs are ideal for documenting the bitemark, it has limitations.<sup>8,12,16</sup> The analysis of bitemark by an expert is often delayed, even with strict adherence to the guidelines by the ABFO. Preservation of the bitemark in its actual life-size form with minimal manipulation, displacement and distortion is of prime importance.<sup>20,30</sup> In this study, the bitemark on putty showed minimal distortion at day 7.

ABFO recommends the recording of impressions of the bitemark with polyvinyl silicone impression materials (light and regular body putty impression materials) and a stone cast of the bitemark can be obtained. The stone casts can thus be stored as evidence.<sup>19</sup>

## CONCLUSION

This study compares the existing techniques of analysing bitemark and a new technique for the same, in terms of their reliability. The bitemark recorded and analysed by the manual docking was seen to demonstrate errors, which could be attributed to the manual errors. This was overcome in the 3D scan overlay technique where the computer aided matching was done by use of algorithm for aligning the 3D scans of the objects

The 3D format can be stored as life size and can be accessed and analysed at any point of time. Hence it is an excellent way to store physical evidences of bitemark area.

The bitemark in apple demonstrated large secondary distortions when compared to the putty material and that was found to be statistically significant. Hence the actual bitemark on skin, which could undergo distortions which are time related, can be replicated in materials such



as Poly vinyl silicone material (putty) which also mimics the elastic property of the skin.

## ACKNOWLEDGEMENT

The authors wish to thank the subjects of the study for their willful participation in the study. also, a sincere thanks to the faculty of CPDM, Indian Institute of Sciences, Bangalore for their technical support during the study.

## REFERENCES

1. Mc Donald and Avery's. *Dentistry for the child and adolescent*.2011.9<sup>th</sup> edition:19-25
2. Mathewson. *Fundamental of paediatric dentistry*.1995. 3<sup>rd</sup> edition:10
3. Pinkham. *Paediatric dentistry*.2005.4<sup>th</sup> edition:3-6
4. Michael Bowers. *Forensic Dental Evidence*.2<sup>nd</sup> edition:93-123
5. Study on Child Abuse INDIA 2007.*Ministry of Women and Child Development* Government of India
6. Pretty IA and Sweet D. The scientific basis for human bitemark analysis- a critical review. *Sci Justice*.2001 April-June;41(2):85-92
7. Nancy Kellogg. Oral and Dental Aspects of Child Abuse.*Pediatrics*.2005 December;116(6):1565-1568
8. American Board of Forensic Odontology Guidelines.1986
9. Giannelli and Paul C. Bite mark analysis. *Faculty Publications*.1986.Paper 153:930-954
10. J. R. Drummond and G. S. McKay. Biting off more than you can chew: a forensic case report. *British Dental Journal*.1999 Nov 13;187(9):466
11. Liza Mazarakis. Dental aspects of child abuse - A New Zealand perspective:1-24
12. T. Shamim, V. Ipe Varghese, PM Shameena, S. Sudha. Human Bite Marks: The Tool Marks of the Oral Cavity.*JIAFM*, 2006 ;28 (2): 0971-0973
13. Lessig, Wenzel, Weber M. Bite mark analysis in forensic routine case work. *EXCLI Journal* 2006;5:93-102
14. Pretty I and Sweet D. The judicial view of bitemark within the United States criminal justice system. *The Journal of Forensic Odonto-Stomatology*. June 2006 Vol.24 No.1
15. A. Van der Velden, M. Spiessens, G. Willems. Bite mark analysis and comparison using image perception technology. *The journal of forensic odonto-stomatology*, vol.24 no.1, June 2006.

16. Herman Bernitz. An Integrated Technique for the Analysis of Skin Bite Marks. Integrated science of bitemark analysis. *American Academy of Forensic Sciences*.2008
17. Roger D Metcalf. Yet another Method of Marking Incisal edges of teeth for Bitemark Analysis. *Journal of Forensic Sciences*. 2008 March;53(2):426-429
18. Glen Flora, Mihran Tuceryan, Herb Blitzer. Forensic Bite Mark Identification Using Image Processing Methods. SAC.2009 March: 8-12
19. Gabriel M Fonseca, Martin A Farah, Sabrina V Orellano, Blaskovich. Bitemark evidence: Use of Polyether in Evidence collection, Conservation, and Comparison. *Journal of Forensic Dental Science*. 2009 July-Dec;1(2):66-72
20. Abber ASheeta. Antemortem and Postmortem estimation of skin wound age in rats: biochemical study.2009. *Bull Alex Fac Med*.;45(1):241-251
21. Darnell Kennedy. Forensic Dentistry and Microbial Analysis of bitemarks. *APJ*.2011:6-15
22. Stella Martin de-las-heras and Daniel Tafur. Comparison of simulated human dermal bitemarks possessing three-dimensional attributes to suspected biters using a proprietary three-dimensional comparison. *Forensic Science International*. 2009 September 10; 190(1-3):33-37
23. Carol Jenny. Child Abuse and Neglect: Diagnosis, Treatment and Evidence .*Elsevier Health Sciences* 2010 September
24. C Stavrianos, L Vasiliadis, J Emmanouil, C Papadopoulos. In Vivo Evaluation of the Accuracy of Two methods for the Bitemark Analysis in Foodstuff. *Research Journal of Medical Sciences*.2011;;5(1):25-31
25. C Stavrianos, D Tatsis, P Stavrianos, AKaramouzi, G Mihail, D Mihailidou. Analysis of time dependent change in bitemark in Styrofoam sheets. *Research Journal of Biological Sciences*.2011;6(1):25-29

26. Stephen A Jesse and Dienard. Child Abuse and Neglect: Implications for the Dental Professional. *Continued Dental Education, Crest- Oral B*. 2012 November;16(5):1-13
27. S.V. Tedeschi-Oliveira, M. Trigueiro, R.N. Oliveira, R.F.H. Melani. Intercanine distance in the analysis of Bite Marks: a comparison of human and domestic Dog dental arches. *J Forensic Odontostomatol* 2011;29(1):30-36
28. Kalyani Bhargava, Deepak Bhargava, Pooja Rastogi, Mayura Paul, Rohit Paul, Jagadeesh H.G, Amita Singla. An Overview of Bite mark Analysis. *J Indian Acad For Med*. 2012 Jan-March;34(1):61-66
29. David Sheets. Bitemarks and The Product Rule. *Journal of Unified Statistical Techniques*:2013 Innaugral Issue:27-31
30. Jeidson Marques, Jamilly Musse, Catarina Cateno, Francisco Corte-Real, Ana Teresa Corte-Real. Analysis of bitemark on foodstuff by computed tomography (cone beam CT) - 3D reconstruction. *JFOS*. December 2013;31(1):1-7

## RESULTS

TABLE no 1 DISTRIBUTION OF BITEMARK IN APPLE- 3D OVERLAY DOCKING (APPLE)

DISTRIBUTION SCORE	3D OVERLAY DOCKING ANALYSIS
0	20%
1	80%
2	0

TABLE no 2. DISTRIBUTION OF BITEMARK IN PUTTY- 3D OVRELAY DOCKING

DISTRIBUTION SCORE	3D OVERLAY DOCKING ANALYSIS
0	0
1	63.3%
2	36.7%

TABLE no 3.DISTORTION IN THE TWO BITEMARK MEDIA- APPLE AND PUTTY

GROUP	NUMBER OF SAMPLES	MEAN±SD	t- value	SIGNIFICANCE
BITEMARK IN APPLE	30	.65997500±1.343408358	2.691	0.012
BITEMARK IN PUTTY	30	.20447853±.046294393	24.192	0.000

TABLE NO 4.COMPARISON OF 3D DOCKING IN APPLE AND 3D DOCKING IN PUTTY

TECHNIQUE	MEAN±SD	"F"	p value
3D-OVERLAY DOCKING (APPLE)	0.80±0.40 <sup>f</sup>	58.40	0.00
3D-OVERLAY DOCKING( PUTTY)	1.63±0/49		

### METHOD OF OBTAINING BITEMARK



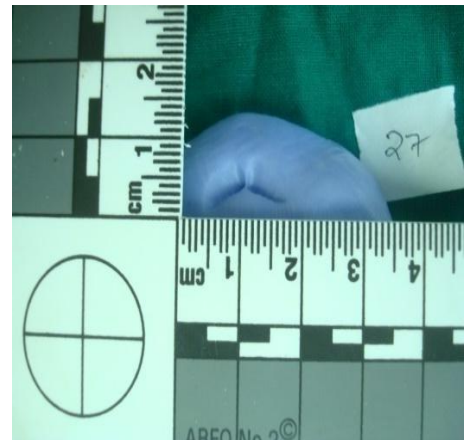
**Fig no 1.Obtaining  
bitemark on apple**



**Fig no 2 .Obtaining  
bitemark on putty material  
placed on a rubber ball**



**Fig no 3. Photograph of  
bitemark on apple**



**Fig no 4. Photograph of  
bitemark on putty**



**Fig no 5. Dental cast (prepared with dental stone type2)**

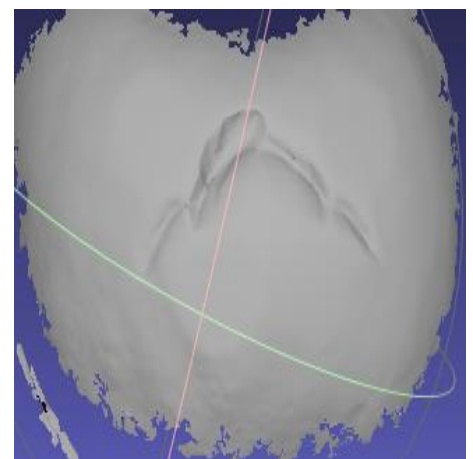
**TECHNIQUE OF BITEMARK ANALYSIS – 3D OVERLAY DOCKING**



**Fig no 6. Optical scanner (3D)**



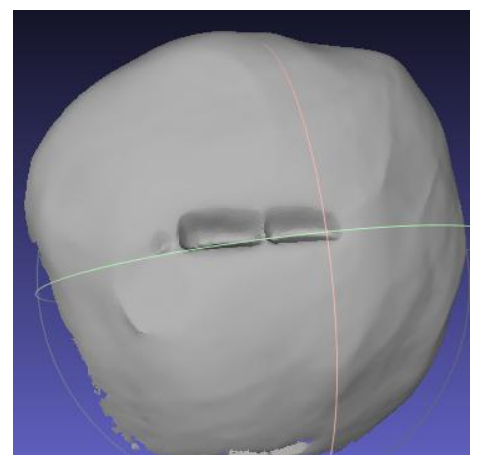
**Fig no 7. Scanning of bitemark in apple**



**Fig no 7.a .3D scan of bitemark in apple**

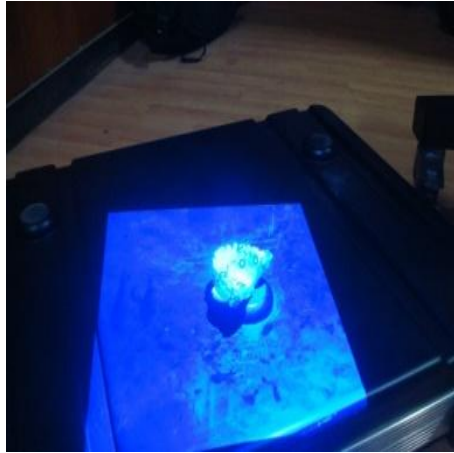


**Fig no 8. Scanning of bitemark in putty**

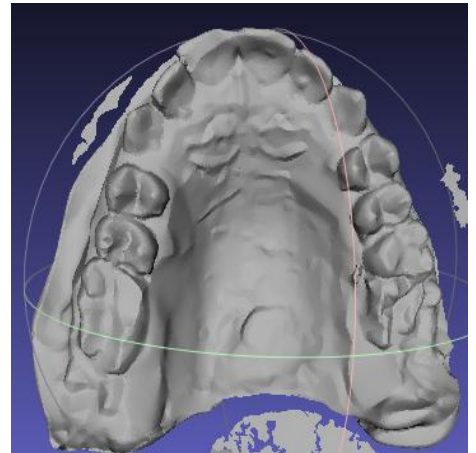


**Fig no 8.a .3D scan of bitemark in putty**

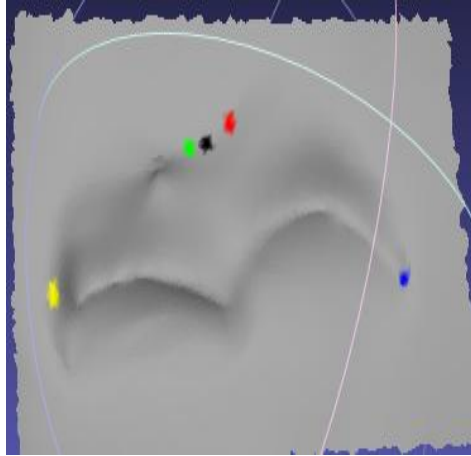




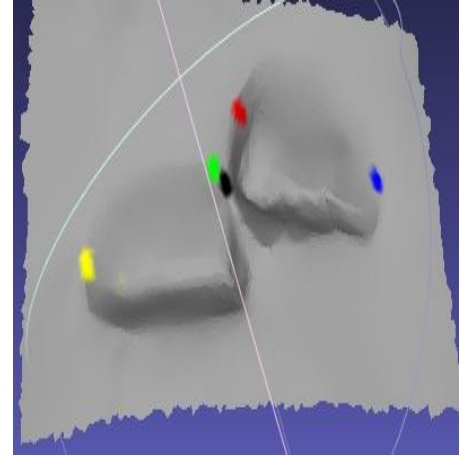
**Fig no 9 .Scanning of dental cast**



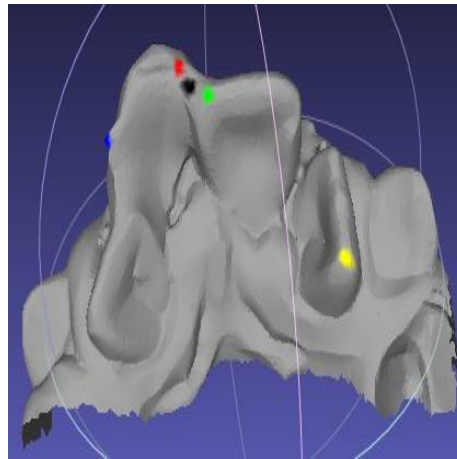
**Fig no 9.a.3D scan of dental cast**



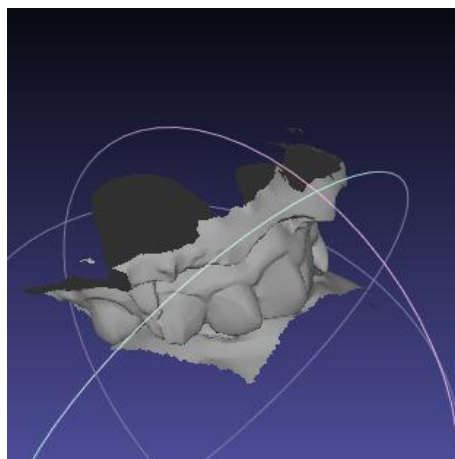
**Fig no 13.colour coding in the bitemark in apple**



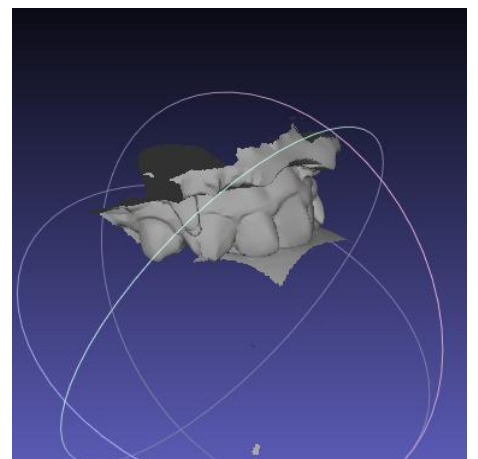
**Fig no 14. Colour coding in the bitemark in putty**



**Fig no 15. Colour coding in the dental cast**



**Fig no 10. 3D overlay of dental cast on bitemark in putty**



**Fig no 12 .3D overlay of dental cast on bitemark in apple**

